

To Name a note on a ledger line, you continue counting up the alphabet for higher letters, or go backwards through the alphabet for lower notes. (Don't skip any lines or spaces)

Ex. TREBLE TOP LINE IS "F"

F G A B C D E F } FOLLOW ALPHABET UP

ANSWER: HIGH "F"

A B C D E F G A } FOLLOW ALPHABET UP

ANSWER: "D"

TREBLE BOTTOM LINE IS "E"

D C B A G F E D } COUNT BACKWARD THROUGH ALPHABET DOWN

ANSWER: LOW "A"

F E D C B A G F } COUNT BACKWARD THROUGH ALPHABET DOWN

ANSWER: "C"

BASS BOTTOM LINE IS G

PARTS OF STAFF

TREBLE CLEF

GRAND STAFF

BARLINE

REPEAT SIGN

BASS CLEF

MEASURE

DOUBLE BARLINE

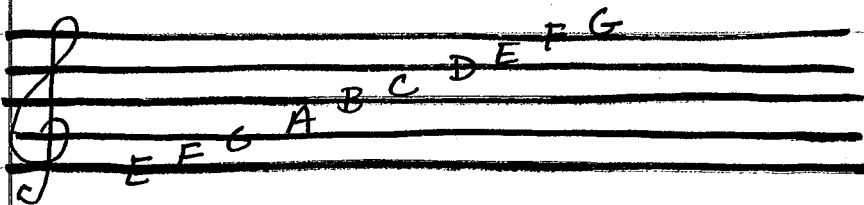
TREBLE CLEF

BASS CLEF



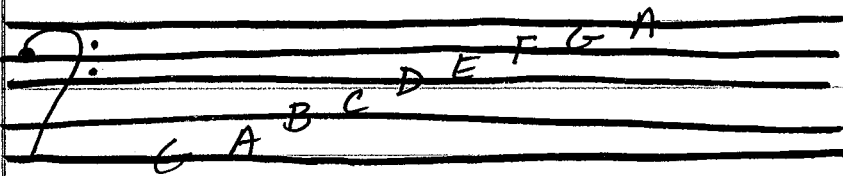
TREBLE LINES: Every Good Boy Does Fine

SPACES: F A C E



BASS LINES: Grizzly Bears Don't Fly Airplanes

SPACES: All Cows Eat Grass



Ledger Lines - Little lines that extend the staff up or down. Added one note at a time.

EXAMPLES:

